



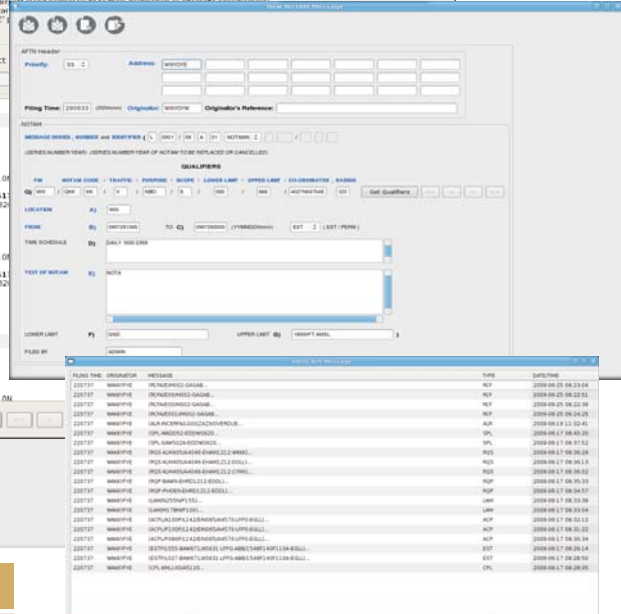
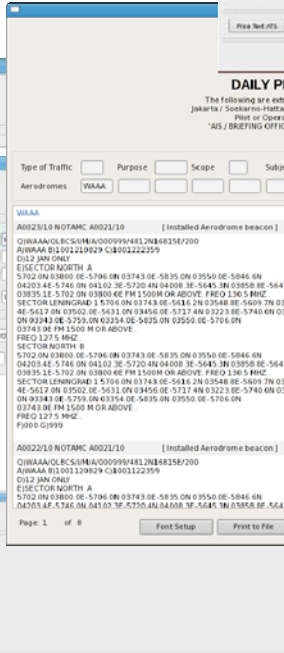
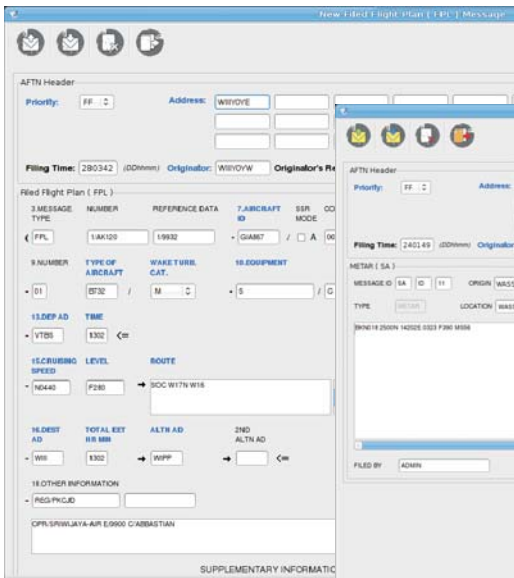
integrated

Aeronautical Information Services



ELSA Integrated Aeronautical Information Services gives you more efficient service & facilities that exceed ICAO basic requirement.

This system also equipped with a user-friendly Graphical User Interface and protected by a multi level password



specifications

- Conform to :
 - ICAO DOC 8126
 - ICAO Annex 15
 - ICAO DOC - 4444
 - ICAO Annex. 10 Vol. II
 - ICAO Annex. 3
 - Manual on codes international codes volume 1.1 WMO no. 306.
- AIS, MET self briefing facilities.
- Integrated AIS (AIPs, AICs, AIP, NOTAMs, NOTAM, SNOWTAMs, BIRDTAMs and ASHTAMs), MET, ARO (ALR, RCF, FPL, DLA, CHG, CNL, DEP, ARR, CPL, EST, CDN, ACP, LAM, RQP, RQS, SPL).
- Pre flight information easily accessible.

For more information on ELSA products and services, visit www.elsa.co.id

PT. Elektrindodaya Pakarusa
Soekarno Hatta Km. 13.8
Bandung-Indonesia
Tel: 62-22-7801536
Fax: 62-22-7801690

ELSA AIS PRODUCT DETAIL SPECIFICATION

Conforming to :
 DOC 8126-Aeronautical Information Service Manual
 DOC 4444 Rules of The AIR TRAFFIC SERVICES
 Annex 15 Aeronautical Information Services
 Integrated Briefing Technical Concept Document
 Guidance Manual For Aeronautical Information Services in the ASIA/PACIFIC Region
 AFTN/ICAO Annex 10 Standards, recommended practices up to Amendment 76.
 Repetitive Flight Plan Input Application Users Guide

Software

Operating System	Linux + Cluster Suite
System Features	GPS Master Clock Synchronizing
	Remote Monitoring & Maintenance
	User Friendly Graphical User Interface
	Automatic Failure Detection & Recovery
	Fully Shared Storage Subsystem
	Comprehensive Data Integrity
	Practical Access Database
	Efficient Storage Data Management, RAID
	Configurable, Multilevel Password
	High Performance Redundant Database
	System status information, network, resources
	System diagnostics
	Equipped with Interface to AMSC
Statistic	Number of incoming & outgoing messages & characters
	Number of NOTAMs, ATS messages
	Number of METEO messages
AFTN Message Handling	Fully compliant to ANNEX 10
	Automatic Header (heading & ending) Generation
	Automatic Sorting & Filtering Messages
	Sequence number check
	Automatic Service Message Generation
	AFTN format to Database format converter, vice versa
	Automatic Message Checking, Correcting and rejected messages management
	Sending & Receiving AFTN messages.
	Automatic Printing for incoming & outgoing messages (configurable)
	Retrievable AFTN mail boxes (incoming & outgoing) & monitoring
ATS Message Module	Supported Message Types: ALR, RCF, FPL, RPL, DLA, CHG, CNL, DEP, ARR, CPL, EST, CDN, ACP, LAM, RQP, RQS
	Automatic Time & Origin filing
	Online Field Checking capability
	ATS free text message template / composer
	Supplementary Flight Plan Message, Request Supplementary Flight Plan Message.
	Automatic checking & warning generation of Active Flight

	Active Flight List Sorting
	Message Retrieve (incoming & outgoing) with various filter
	Automatic field template insertion for retrieved messages
	Automatic filing from field database, Aircraft type, aerodrome, route
	Automatic filing address and data of ATS messages (DEP, DLA, CNL, CHG, ARR), based on the related FPL
	Online monitoring of Inbound, Outbound and Overflights
	Configurable Time Window
	Various filtering and sorting criteria
	Retrievable of traffic message history
NOTAM module	Automatic processing of NOTAM messages Supported NOTAM type : NOTAM, SNOWNOTAM, ASHTAM, BIRDTAM, MULTIPART NOTAM
	New Notam Template, Delete, Edit, Retrieve-Incoming, Outgoing NOTAM, View based on selected criteria & filter
	Active Sorted NOTAM LIST
	Warning for expired NOTAM
	Template for request NOTAM (RQN) and NOTAM check list (RQL) to other notam office
	Automatic NOTAM series number & allocation
	Request NOTAM handling from other station
	NOTAM response template
	NOTAM distribution list
	Automatic processing to NOTAM check list
	Generation of NOTAM check list & Summary
	Page Information Display Distribution, 20 pages
Integrated Self Briefing	AIS, METEO and ATS messages
Preflight Information Bulletin	Generating bulletin based on type : Area type bulletin, Route type bulletin, Aerodrome type bulletin Based on FPL, RPL, NOTAMs Store, Edit, Print, Retrieve
Postflight Information Bulletin	Edit, Store, Print & Retrieve
METEO module	Generating (template) & processing meteorological messages : METAR, SPECI, SIGMET, AIRMET, SYNOP, WITEM, TAFOR, ROFOR, ARFOR, AIREP, AIREP, WARNING, SYNOP, WINSHEARE WARNING, ADVISORY VULCANO, VULCANIC Activity Report. Automatic online field checking
	Sorted Active Meteo List
	Request Meteo RQM, Flight Schedule AIS, Flight Accident ATS
	Retrieval with various criteria & filter.